



BEST PRACTICES

Launching Canvas Quizzes: Instructions for Students

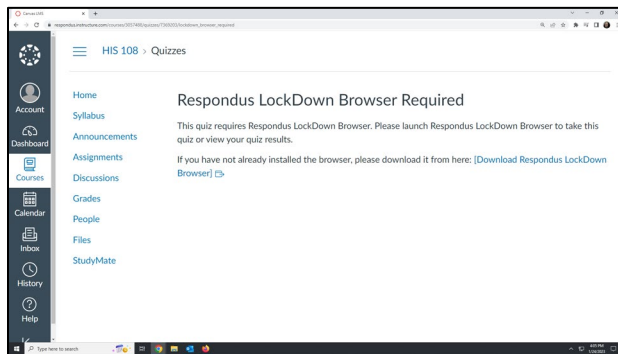
Installing LockDown Browser (all devices)

- Select a quiz that requires LockDown Browser
- Select the link to download LockDown Browser and follow the instructions
- Your instructor or institution may also provide the download link directly
- **LockDown Browser only needs to be installed to a device once**

Starting a Quiz (Windows, Mac, iPad)

Classic Quizzes

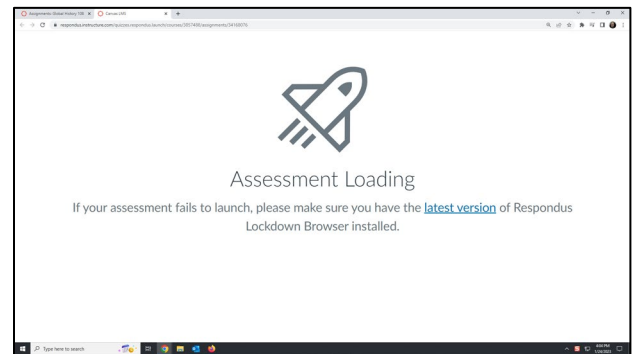
If the download instructions look like this:



1. Exit the standard browser
2. Open the LockDown Browser application
3. Log into to Canvas and navigate to the quiz

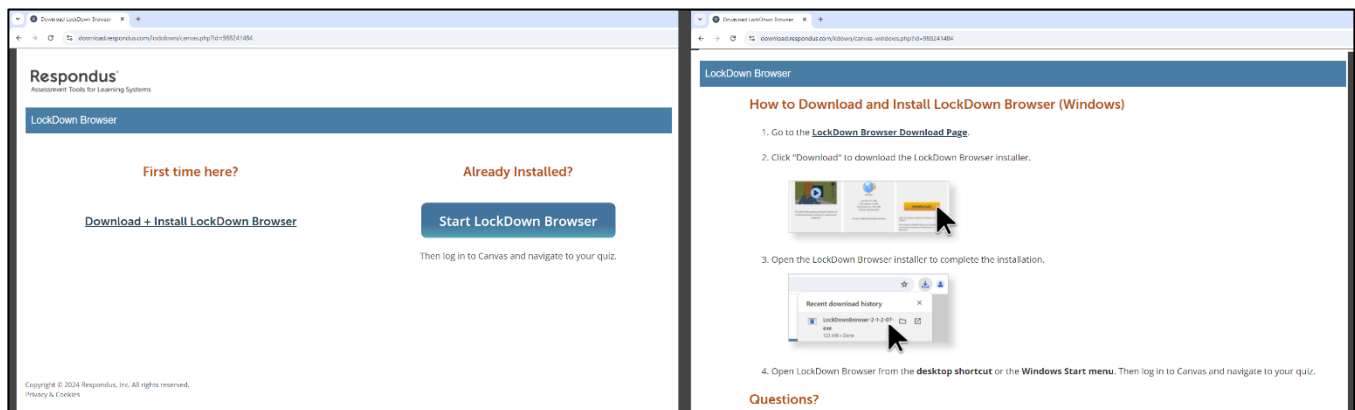
New Quizzes

If the download instructions look like this:



1. Return to the course in a standard browser
2. Select the quiz
3. LockDown Browser will automatically launch

- For **Classic Quizzes**, LockDown Browser download link additionally provides the following pages, which direct the student to either launch or install LockDown Browser, as needed.



Starting a Quiz (Chromebook)

- After installing the LockDown Browser Extension from the download link, go back to the course
- Select the quiz and LockDown Browser will launch automatically